

The NORLINA 2,601 SQ.FT.

LEFT GARAGE

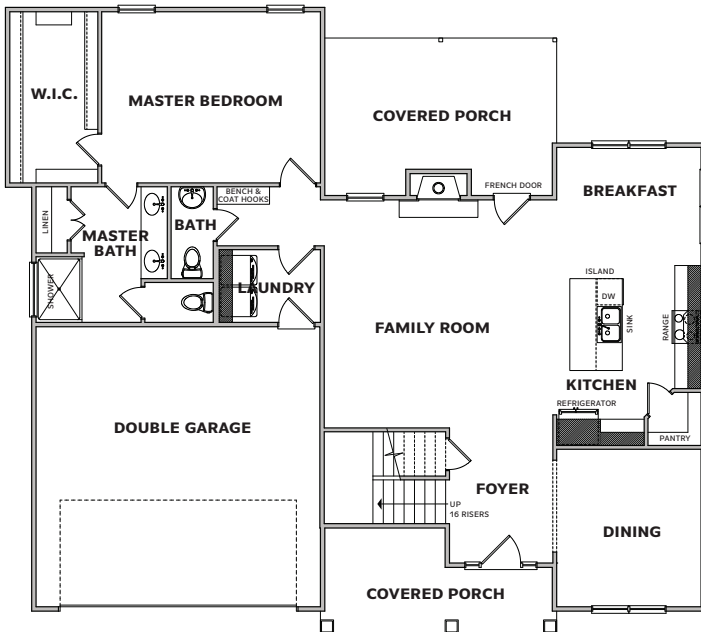
250317B

Home Specifications

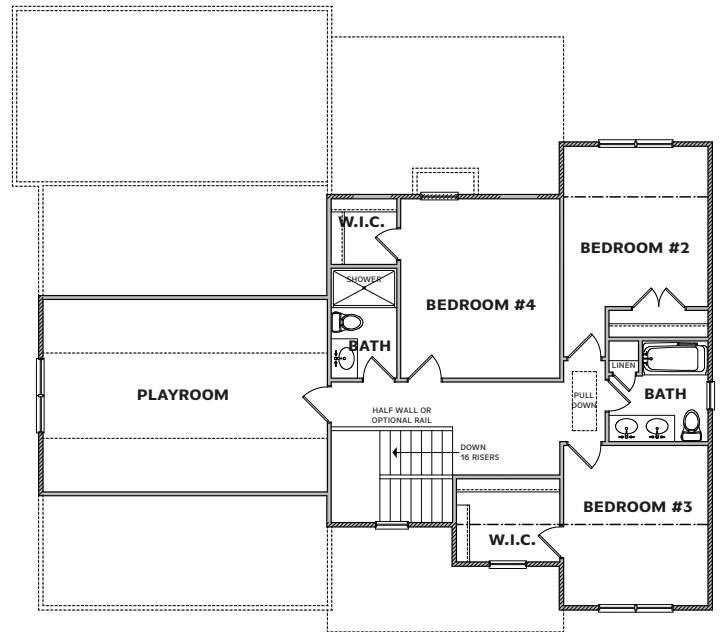
WIDTH	53'6"
DEPTH	47'8"
SQUARE FOOTAGE	2,601
TOTAL HEATED	2,601 SQ.FT.
FIRST FLOOR	1,456 SQ.FT.
SECOND FLOOR	819 SQ.FT.
PLAY ROOM	326 SQ.FT.
TOTAL UNHEATED	794 SQ.FT.
FRONT PORCH	115 SQ.FT.
GARAGE	478 SQ.FT.
COVERED REAR PORCH	201 SQ.FT.



FRONT ELEVATION



FIRST FLOOR



SECOND FLOOR



SIGNATURE
HOME BUILDERS, INC.

SignatureHOMEBUILDERS.COM

1209 N. Main Street, Lillington, NC 27546 | Phone 910-892-9299 | Fax 910-892-9242