

The SINCLAIR

THREE-CAR GARAGE

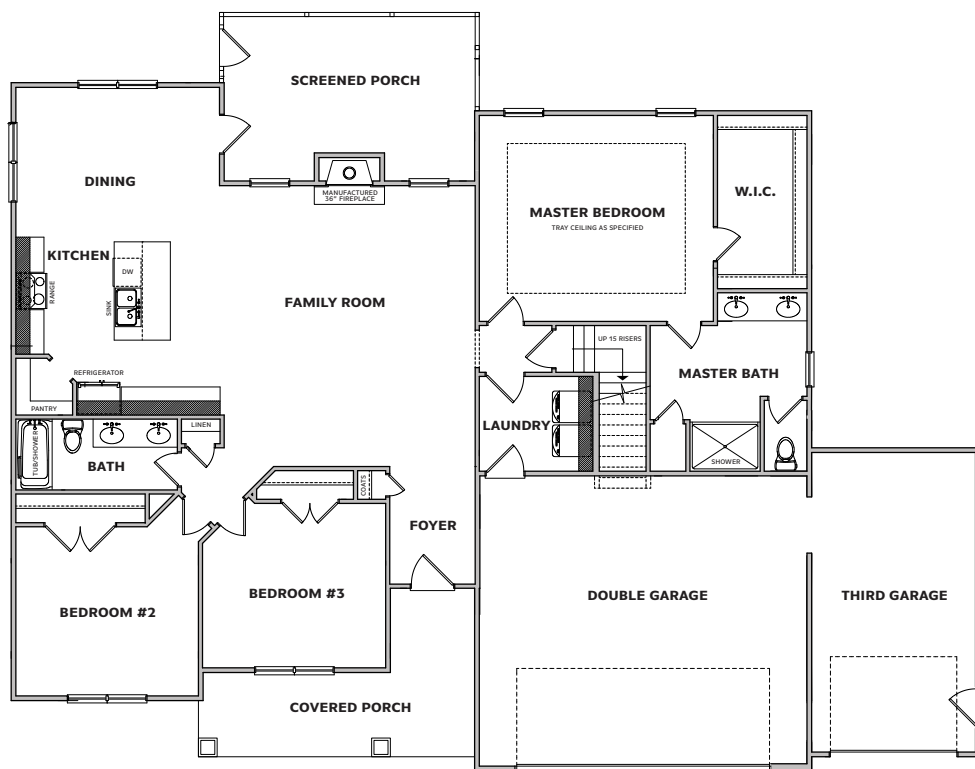
250315B

Home Specifications

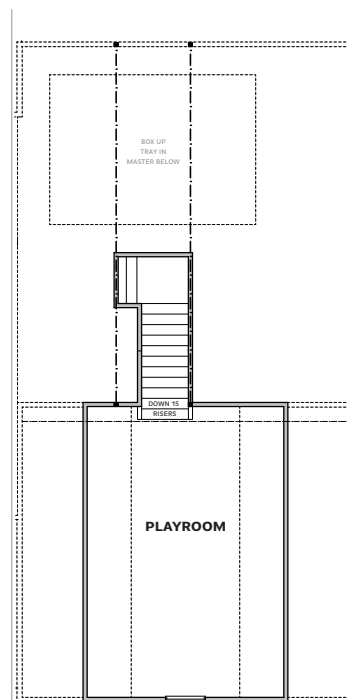
WIDTH	69
DEPTH	43
SQUARE FOOTAGE	3,323
TOTAL HEATED	2,187 SQ.FT.
FIRST FLOOR	1,880 SQ.FT.
PLAY ROOM	307 SQ.FT.
TOTAL UNHEATED	1,136 SQ.FT.
FRONT PORCH	153 SQ.FT.
COVERED PORCH	218 SQ.FT.
DOUBLE GARAGE	501 SQ.FT.
THIRD GARAGE	264 SQ.FT.



FRONT ELEVATION



FIRST FLOOR



SECOND FLOOR



SIGNATURE
HOME BUILDERS, INC.

SignatureHOMEBUILDERS.COM

1209 N. Main Street, Lillington, NC 27546 | Phone 910-892-9299 | Fax 910-892-9242