

The MAYVIEW 2,731 SQ.FT.

TWO-CAR GARAGE

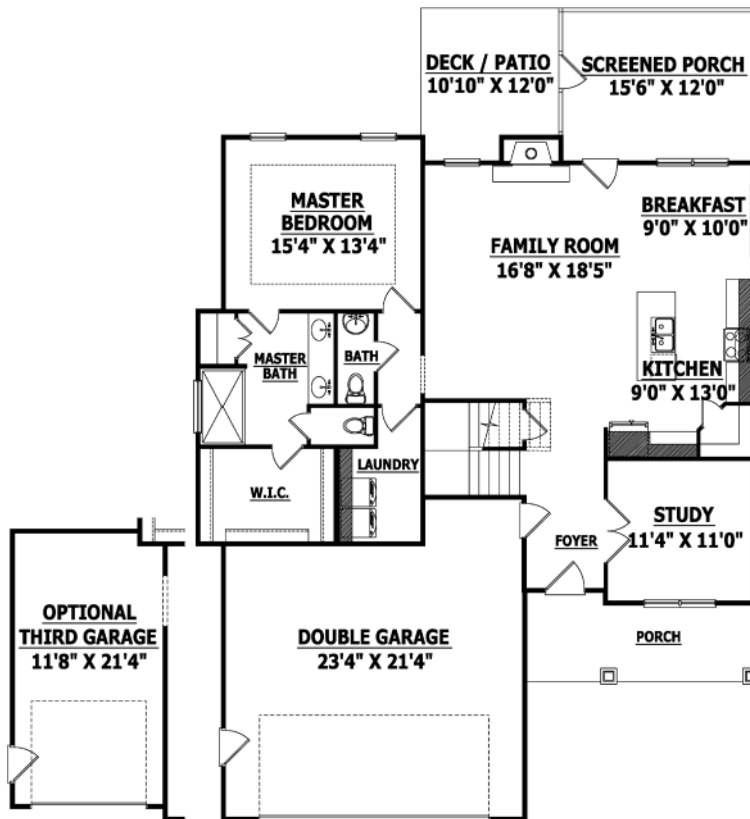
191017B

Home Specifications

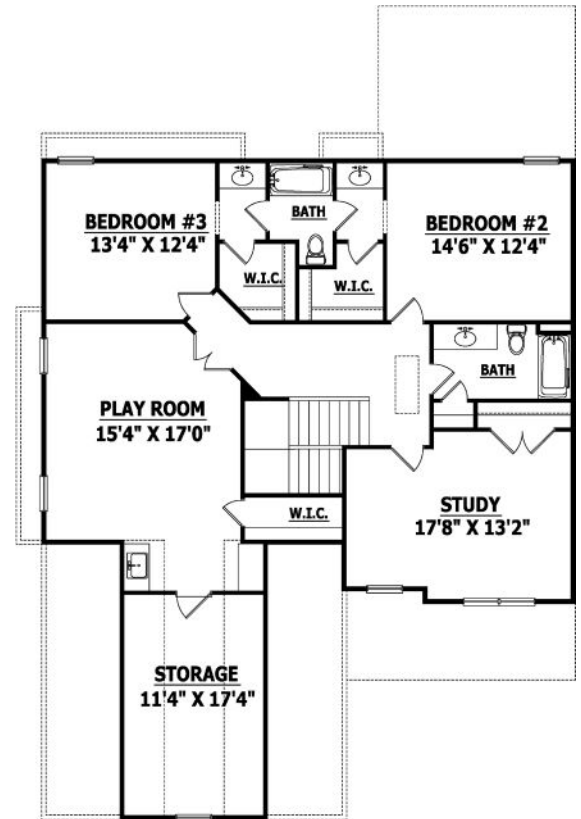
WIDTH	43
DEPTH	64
SQUARE FOOTAGE	2,731
TOTAL HEATED	2,731 SQ.FT.
FIRST FLOOR	1,395 SQ.FT.
SECOND FLOOR	1,336 SQ.FT.
TOTAL UNHEATED	1,171 SQ.FT.
GARAGE	547 SQ.FT.
FRONT PORCH	114 SQ.FT.
COVERED PORCH	185 SQ.FT.
DECK / PATIO	120 SQ.FT.
STORAGE	205 SQ.FT.
UNHEATED OPTION A	261 SQ.FT.
THIRD GARAGE	261 SQ.FT.



FRONT ELEVATION



FIRST FLOOR



SECOND FLOOR



SIGNATURE
HOME BUILDERS, INC.

SignatureHOMEBUILDERS.COM

1209 N. Main Street, Lillington, NC 27546 | Phone 910-892-9299 | Fax 910-892-9242