

The BAILEY 1,392 SQ.FT.

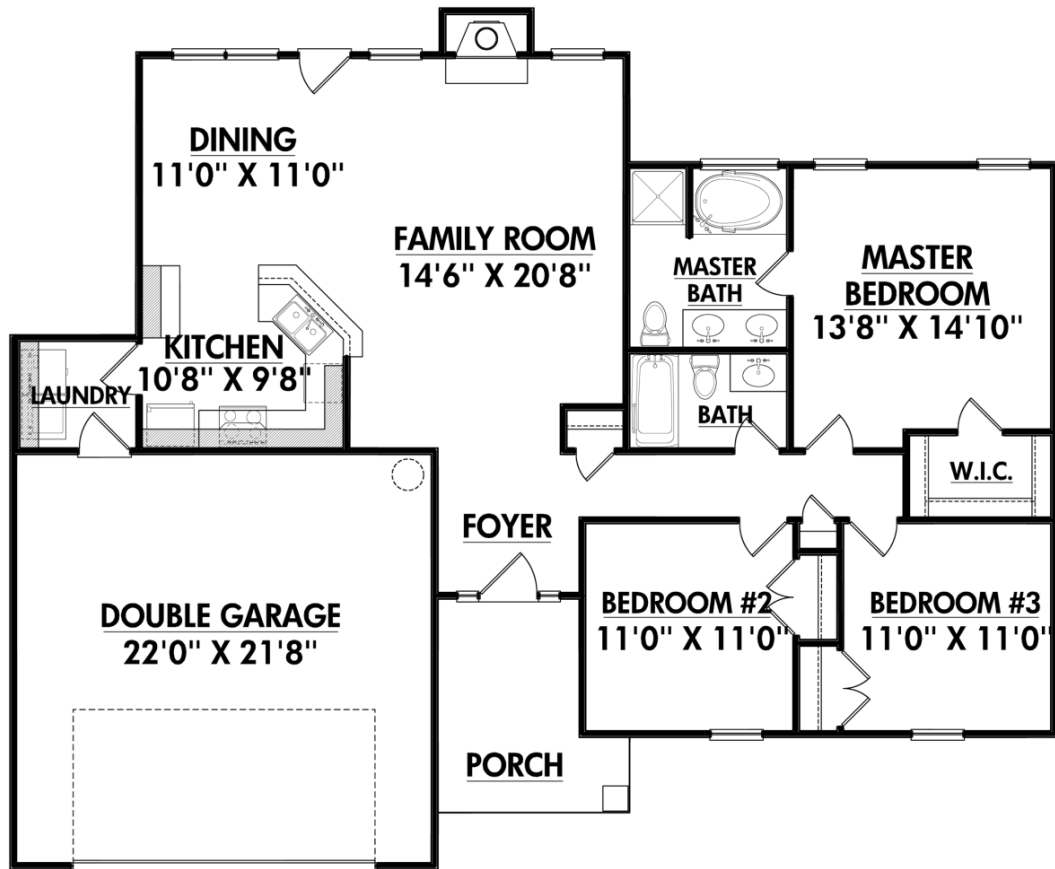
100723B

Home Specifications



FRONT ELEVATION

WIDTH	56
DEPTH	45
SQUARE FOOTAGE	1,392
TOTAL HEATED	1,392 SQ.FT.
FIRST FLOOR	1,392 SQ.FT.
TOTAL UNHEATED	590 SQ.FT.
GARAGE	496 SQ.FT.
FRONT PORCH	94 SQ.FT.



FIRST FLOOR



SIGNATURE
HOME BUILDERS, INC.

SignatureHOMEBUILDERS.COM

1209 N. Main Street, Lillington, NC 27546 | Phone 910-892-9299 | Fax 910-892-9242